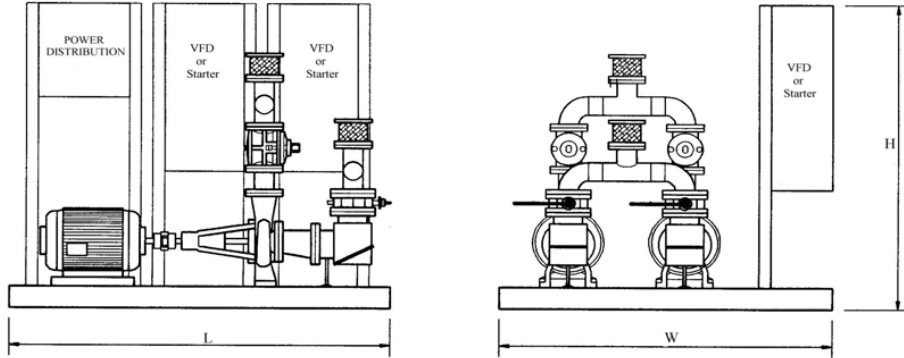


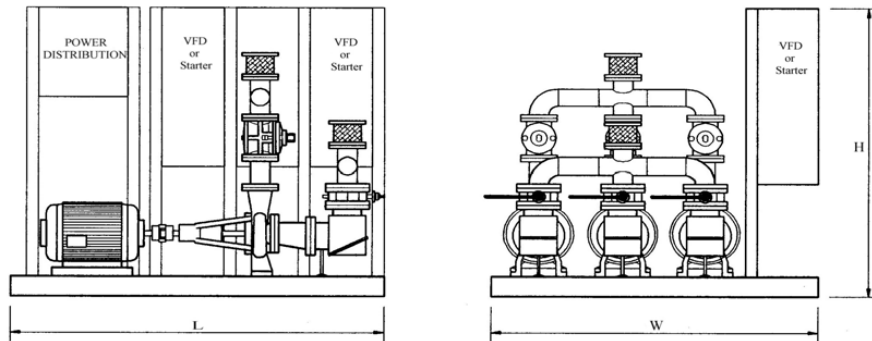
PACKAGED CIRCULATING SYSTEMS

SERIES PCS



SYSTEM DIMENSIONS - DUPLEX

SYSTEM CONNECTION SIZE	HP PER PUMP	L X W X H (INCHES)	WEIGHT (LBS.)
2"	.50 – 7.5	60 x 66 x 72	1,400
3"	1.5 – 10	60 x 66 x 72	1,600
4"	2 – 10	66 x 72 x 72	1,900
	15 – 20	84 x 72 x 72	2,400
6"	5 – 10	66 x 72 x 72	2,300
	15 – 40	90 x 72 x 72	3,800
8"	10 – 20	90 x 80 x 72	3,500
	25 – 30	90 x 84 x 72	3,900
	40 – 60	96 x 84 x 72	5,200



SYSTEM DIMENSIONS – TRIPLEX

SYSTEM CONNECTION SIZE	HP PER PUMP	L X W X H (INCHES)	WEIGHT (LBS.)
2"	.50 – 7.5	60 x 90 x 72	1,900
3"	1.5 – 10	60 x 90 x 72	2,200
4"	2 – 10	66 x 96 x 72	2,600
	15 – 20	84 x 96 x 72	3,400
6"	5 – 10	66 x 96 x 72	3,300
	15 – 40	90 x 96 x 72	5,500
8"	10 – 20	90 x 102 x 72	5,000
	25 – 30	90 x 108 x 72	5,500
	40 – 60	96 x 108 x 72	7,400

.50-10HP Close Coupled Pumps: 15-60HP Flexible Coupled Pumps
Maximum working pressure is 175psi.

Standard arrangement shown. Other options available.
Not for construction purposes unless certified.